

SITE PHOTOGRAPHS

Rand Water's proposed Construction & Maintenance of New System 1 at Rand Water Vereeniging Treatment Works, Installation of approximately 7 Km Phase 2 Sludge Pipeline in Vereeniging, 1.5 Km Sludge Line in Panfontein and Associated Infrastructure.

PROPOSED NEW SYSTEM ONE

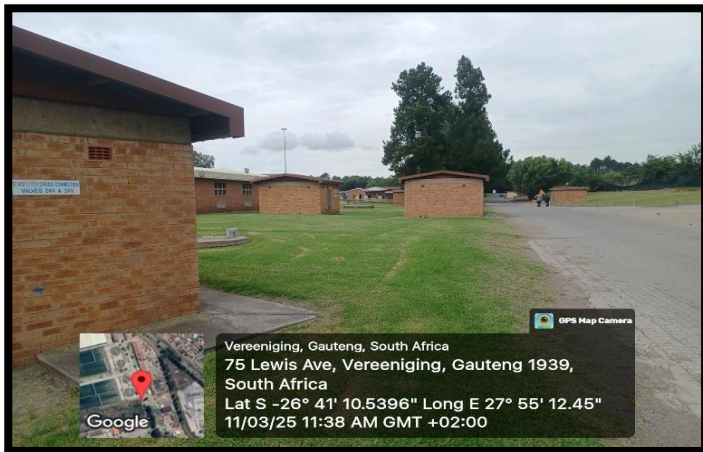


Figure 1: The area where the proposed online lab is to be constructed

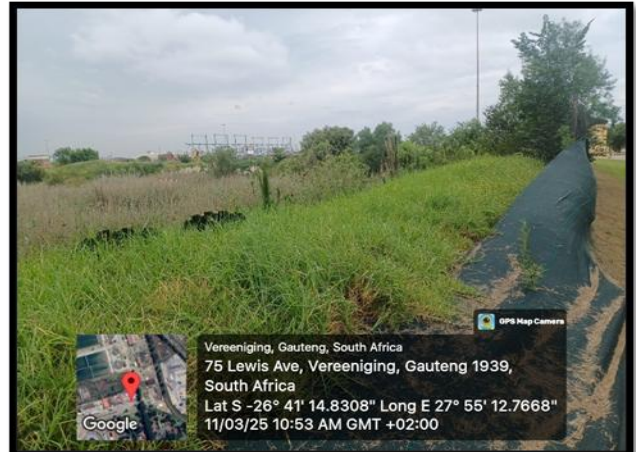


Figure 2: The Demolished Old New System 1 site

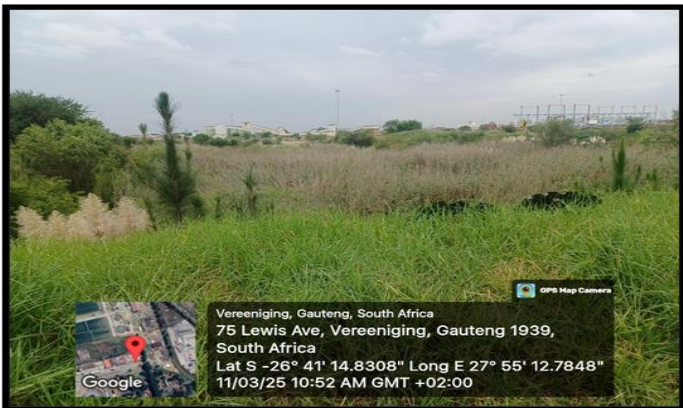


Figure 3: Proposed New System 1 Site

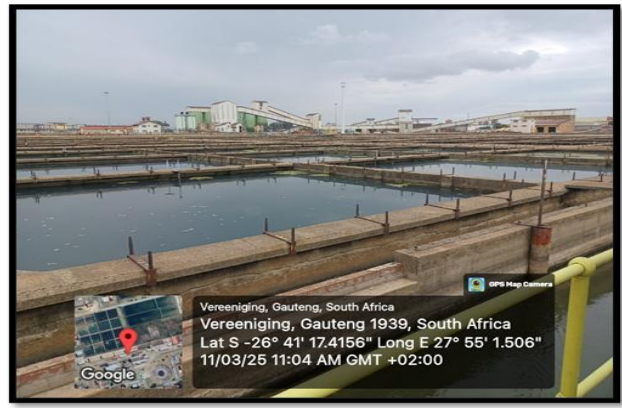


Figure 4: Sedimentation Tanks for existing systems next to the proposed New System 1

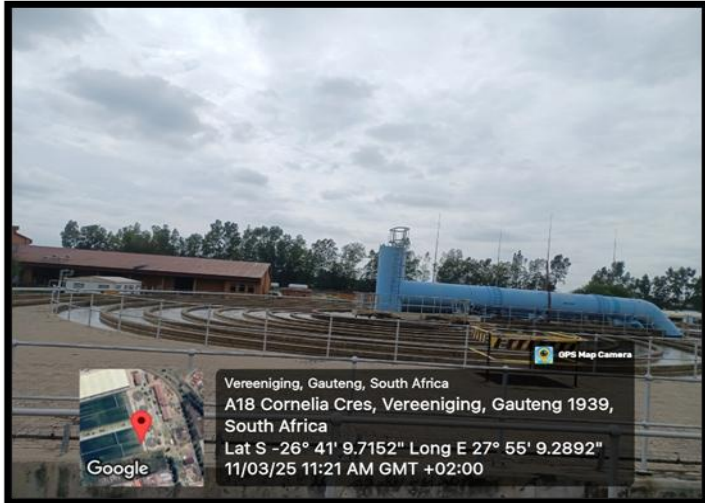


Figure 5: Flocculators for existing systems next to the proposed new system 1

7 KM SLUDGE PIPELINE



Figure 1: Old Building located behind the Phase 2 Sludge pipeline next to the Vaal River



Figure 2: Phase 2 Pipeline Servitude

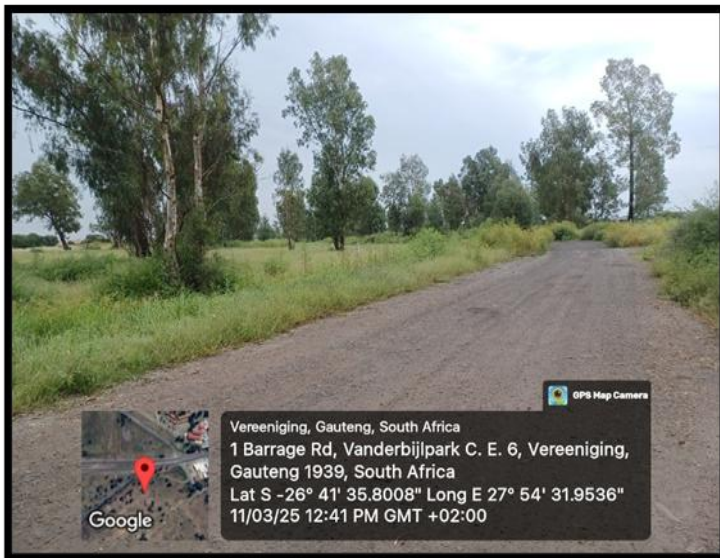


Figure 3: Phase 2 Pipeline Route

Figure 4: Phase 2 Pipeline Route

PANFONTEIN SLUDGE PIPELINE



Figure 1: The Panfontein Site

Figure 2: Panfontein Pipeline Servitude



Figure 3: Maize Field near Panfontein